



QUICK INFO – SET UP

Fridge-tag 2L

1 Packaging content



Fridge-tag



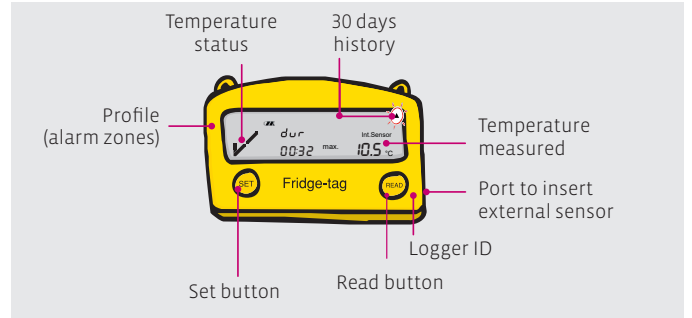
External sensor (optional)



Note: If you have ordered a Fridge-tag with an external sensor, place the external sensor in its predetermined location, before activating the device.

Placing the Fridge-tag?
See **point 8**

2 Fridge-tag information



3 State of delivery

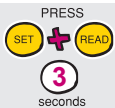
You receive the Fridge-tag in sleep mode. The display (LCD) is blank.



Note: If required note the date of activation on the back of the Fridge-tag.

4 Activation of the device

Note: Once the device has been activated, it cannot be stopped anymore.



To activate the device, press the **SET** and the **READ** buttons simultaneously for more than 3 seconds. The following calendar format will appear: **dd.mm.yyyy**.

Note: After approx. 60 seconds without pressing any button of the Fridge-tag the device goes back into sleep mode. Start from the beginning.

5 Setting the calendar format

Press **READ** to change the calendar format.



Option 1
Setting the calendar format to: **dd.mm.yyyy**

Option 2
Setting the calendar format to: **mm.dd.yyyy**

Then press **SET** to save the calendar format.

6 Setting the date and time

READ The **READ** button is used to adjust the numbers. Each time you press the **READ** button, the number in the flashing digit will increase by 1.

SET The **SET** button is used to save the number. After pressing the **SET** button, the next digit will start flashing.



The 1st digit is flashing:
Press **READ** until «1» appears as the first digit.
Press **SET** to save the digit.
Go on with the next digits in the same way until date and time is set.

Correct or change settings?
See user manual in chapter «**Learn More**»

7 Activation completed



As soon as the last digit of the time setting is confirmed, the activation is completed. Now place the Fridge-tag. If you have a device with external sensor, connect the device with the external sensor. During max. 1 minute after activation no temperature is displayed on the screen.

Connection error?
See user manual in chapter «**Learn More**»

8 Placing the Fridge-tag

The activated Fridge-tag must be placed immediately in its predetermined location. It is recommended and important to place the device in the centre of the refrigerator for an optimal temperature observation.

External sensor

Two hours before activating the device the external sensor must be placed in its predetermined location. It is recommended and important to place the external sensor in the centre of the refrigerator for an optimal temperature observation and to avoid any incorrect measurements when starting the device.



Placing the Fridge-tag?
See user manual in chapter «**Learn More**»

Learn More

Fridge-tag Support



User Manual



Product information



Berlinger Website



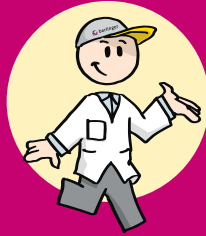
Video



Technical Specification



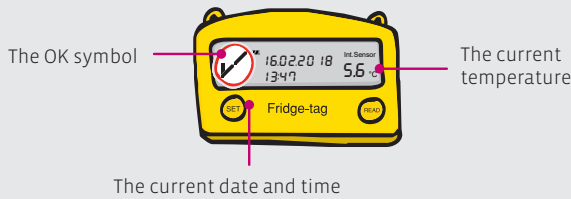
Scan the QR code or click on www.berlinger.com/support/fridge-tag-2l



1 Temperature status

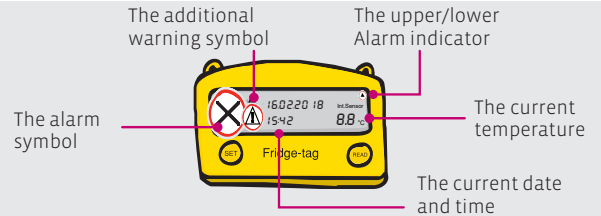
Indication of an OK display

In measurement mode, when no alarm has been triggered, the following information is indicated:



Indication of an alarm display

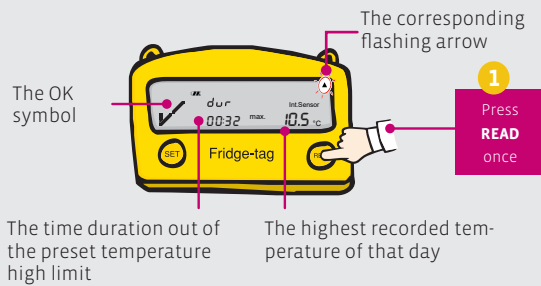
In measurement mode, when an alarm has been triggered, the following information is indicated



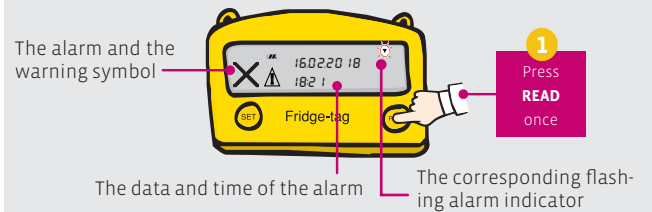
Alarm display and confirmation options?
See user manual in chapter «Learn More»

2 Reading the history

Example of an OK display

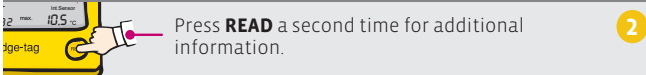


Example of an alarm display



Acknowledge alarm and buzzer details?
See user manual in chapter «Learn More»

Alarm display: additional information



Note: Continue repetitively pressing the **READ** button to read out the details of the past 30 days.



Note: Press and hold the **READ** button again for at least 3 seconds and the next alarm event will appear on the screen.

Acknowledge alarm?
See user manual in chapter «Learn More»

3 Download reports



Connect the device via USB with your PC/MAC.

Note: Disconnect the external sensor from the device first.

The Fridge-tag will now generate a PDF and an ASCII report. This process can take up to 2 minutes.

Download reports?
See user manual in chapter «Learn More»

For more information click on www.berlinger.com/support/fridge-tag-2-l

