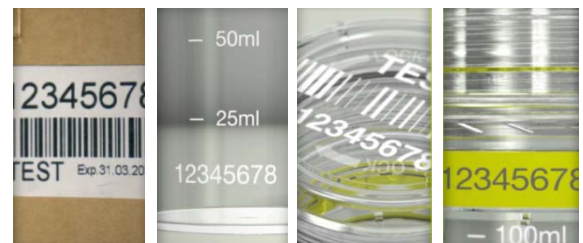


Handling instruction berlinger® *lausanne* KIT

Kit presentation

- Each berlinger® *lausanne* KIT is packed in a cardboard box which is sealed with a printed shrink-wrapping.
- Each berlinger® *lausanne* KIT is uniquely numbered with a 8-digit number on the following components:
 - cardboard box
 - plastic containers
 - security caps
 - green pre-sealing ring



Prior to use / integrity checks

- Please check that the kit is intact and the shrink-wrapping of the cardboard box and the pre-sealing ring are still intact.
- Please check if all components of the kit have the same unique number: on the cardboard box, the containers, the security caps, the green pre-sealing rings and on additional labels (if included).
- To open the shrink-wrap place a finger on each side of the perforation and move them outwards. The black line shows where the perforation is.
- Ensure you that the spring clip is fixed in the cap.



Fill level / scale

The laser scale on the plastic container indicates the following volumes: 25ml / 50ml / 75ml / 100ml

- **Filling the container with urine:**
 - Maximum fill level of liquid = approx. 150ml
 - >Do not fill the bottle over the matt line indicated.
 - >Be aware that liquid expands when frozen.
- **Filling the container with blood tubes:**
 - Maximum up to 4 10ml tubes per container, if wished to centrifuge the kit while still sealed.
 - >The sealed kits can be centrifuged by using a foam insert to stabilize the tubes, individually available.
 - Maximum 5-7 tubes per container, without the need of centrifugation of the sealed kit.



Step-by-step handling instruction

As soon as sufficient urine / blood has been collected, the process of dividing the urine volume / blood tubes into the containers and sealing them can be completed (in accordance to your guidelines).

- Follow the instructions for opening and use :
 - Detach and discard the green pre-sealing ring and the separated end part. Attention; pull on No. 1 first.
 - Open the container by turning the security cap in an anti-clockwise direction!
Do not turn clockwise otherwise it will seal.
 - Divide the urine or blood samples into the containers as directed.
 - Close the container, by turning the cap gently in a clockwise direction; in the direction of the sign “lock →”.
 - Turn gently until it moves no further. Important: Make sure that there is no gap between the cap and the container (see picture).
When the elevated triangle on the cap is above the ribs of the container it is an indication, that it is properly closed.
 - Please ensure the proper closure of the container by trying to move the cap in an anti-clockwise direction. The cap should not move anymore and must be firmly in place.



Preparation for transportation to the laborator

- To comply with the IATA DGR Packaging Instructions for the transportation of "exempt animal specimens", the **berlinger®/lausanneKIT** can be put into a watertight plastic bag which contains an absorbent pad in each bag.
>Please leave the absorbent pad inside the watertight bag.
- Seal the watertight plastic bag by removing the backing paper from the void tape and press it firmly together. Please ensure that there is as little air as possible in the bag, by stroking upwards before closing it.
- After this procedure the sealed containers can be put back into the cardboard box for further transportation.



The manufacturer shall not be held liable if the **berlinger®/lausanneKIT** is used beyond the manufacturers given limitations and handling instructions. Please carefully read the green note inside the cardboard box. Please note that any instructions for use published prior to this dated guide are no longer valid! The latest version of the handling instruction can be found on our website: