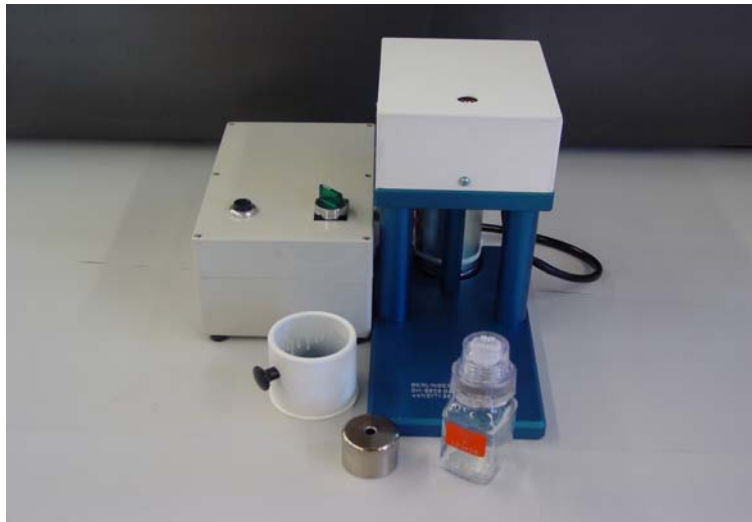


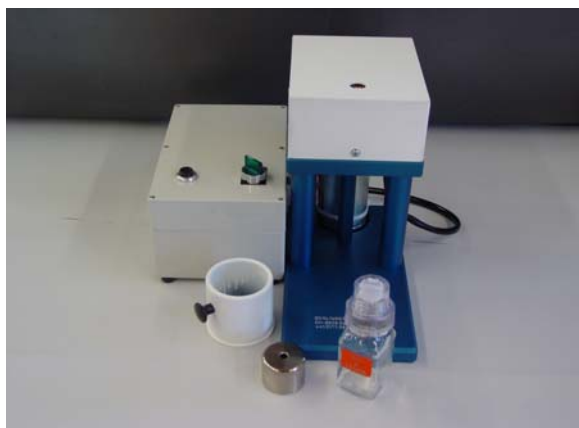
Universal opener

to open urine and blood BEREK-KIT's



Instructions for assembly and use

Assembly instruction of universal opener



supplied items

- grey electronic box
(dim. 25x16.5x13cm)
 - blue opening machine
(dim. 29x15x30cm)
 - white and grey cup
 - silver opening devices
- >> total weight approx. 12.0kg

accessories

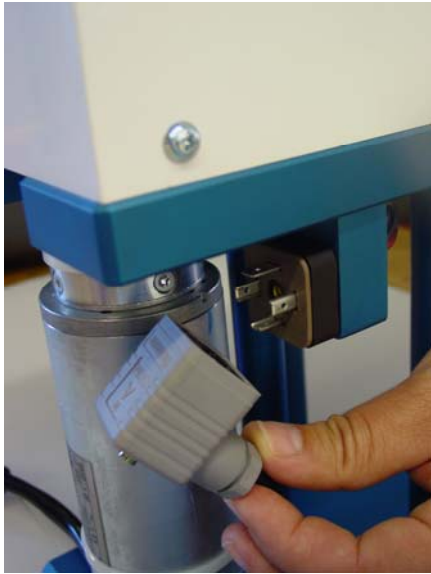
- 2 rubber pads
- 8 fastener (hook&loop)



- 1** Place the grey electronic box either on the left side, the right side or on the top of the opening machine.



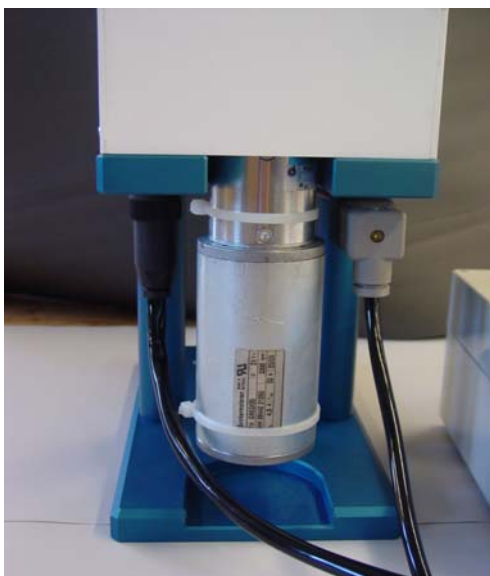
- 2** On the back side of the grey electronic box you may find two black cables. Please take the cable with the rounded end and put it onto the round plug on the right side of the blue opening machine. While placing the cable on the plug, the eyelet of the cable has to be held towards the back and then the lock has to be screwed on.



- 3 Then put the second cable into the plug on the left side of the opening machine. This cable has a grey, quadratic end.



- 4 After placing this cable, please tighten the golden screw with help of a screw driver.

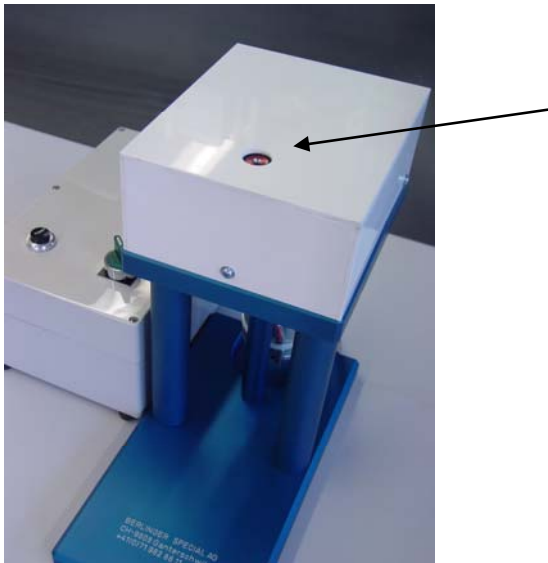


After plugging both cables it should look like this!



- 5 To connect the machine to the electricity, please take the grey cable and put it into the socket on the back of the grey electronic box.

The power supply range is from 90 to 260 V AC.



- 6 Once a month please put one drop of oil into the red hole on the top of the blue opening machine!



- 7 In case you place the grey electronic box on the top of the blue opening machine, you may use the fastener to make it more stable!

Now the machine is ready for use.

Please do not hesitate to contact us in case of any questions or problems.

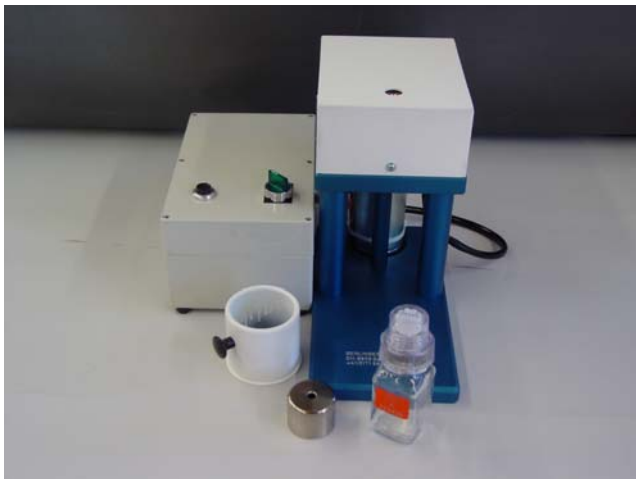
Berlinger Special AG
Mitteldorfstrasse 2
9608 Ganterschwil

phone: +41 71 982 88 11
fax: + 41 71 982 88 39
info@berlinger.ch

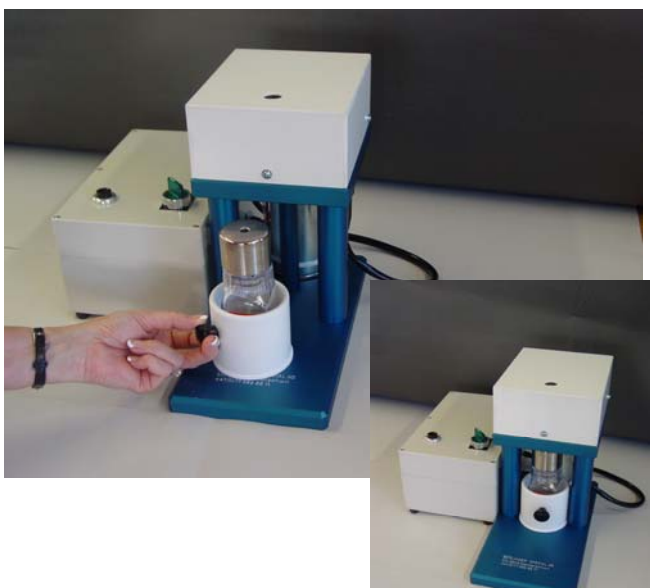
Instructions for use



- 1** Turn on the power! The switch has to be on "I" and the light will be green"



- 2** Take 1 BEREK-KIT bottle and place it into the white cup. Then put on the silver divercer onto the BEREK-KIT.



- 3** With help of the black knob place the white cup with the bottle into the blue opening machine.



- 4 By pushing the black button on the grey electronic box, the opening process starts. Please wait about 5 seconds and the plastic cap will be broken.

Please do not take out the cup with the bottle before this process is completed. (While the opening process is ongoing you may hear a low operating sound)

After the opening process is finished you may take out the cup with the bottle and screw off the broken plastic cap.

Now the bottle is opened and ready for analysis!



Accessories for the BEREK-KIT small

Please put the BEREK-KIT small into the grey cup and put on the small silver device. Then, please follow at the same procedure as above.

Please do not hesitate to contact us if you have any questions or concerns.

Berlinger Special AG
Mitteldorfstrasse 2
9608 Ganterschwil
Switzerland

phone: +41 71 982 88 11
fax: +41 71 982 88 39
info@berlinger.ch
www.berlinger.ch

November 2008